

T OPSUND

L I G H T I N G

LumiWeave

Versatile lighting solution





Lumiweave represents a versatile lighting solution that reimagines the traditional light rail concept. Its innovative core feature, a conductive textile ribbon, enables the effortless positioning of luminaires and the immediate creation of bespoke lighting solutions right where they are needed.

Equal parts easy and avant-garde, Lumiweave harnesses the design of a belt in a groundbreaking lighting concept that merges materiality and light. Featuring a textural, fabric belt that conducts electricity, it enables light to flow through space. Lumiweave provides professionals a powerful toolkit for creating personalised lighting effects and unique atmospheres with different luminaires and click-and-connect functionality.





Easy connection Fix / Click / Connect

Each belt, which can be cut as needed, accommodates multiple luminaires and operates with simple plug-in technology for unparalleled ease of installation and connection. The belt offers adjustments in tension from taut to relaxed as well as click-and-connect functionality, snapping into a buckle attached to each luminaire.

Shaping Atmospheres

Endlessly versatile, Lumiweave offers the freedom to combine different levels of diffuse and focused illumination as never before to create a unique atmosphere in any interior.

Design a space by drawing with the belt, conducting light to the right place while evoking an emotional response and sense of wellbeing.

Visual Hierarchy

Raining Light

Reimagining Spaces

Framing Space

Defying Gravity

Flowing Pendants

Creative Canopy Connection

Suspended Animation



Visual Hierarchy

Lumiweave’s revolutionary belt design provides a powerful toolkit for reimagining spaces. Combining multiple lighting effects and placing light precisely where needed, it creates visual hierarchies in any space.





Raining Light

From a single spotlight positioned close at hand to a cascading installation of luminaires overhead, Lumiweave's ceiling-to-floor possibilities create a stunning display of light in varying intensity and effect.



Reimagining Spaces

Merging light and materiality, Lumiweave introduces masterful new ways to delineate space. Tracing a slender outline, the fabric belt creates a contained area within an open layout, serving as an illuminated perimeter with minimal presence.

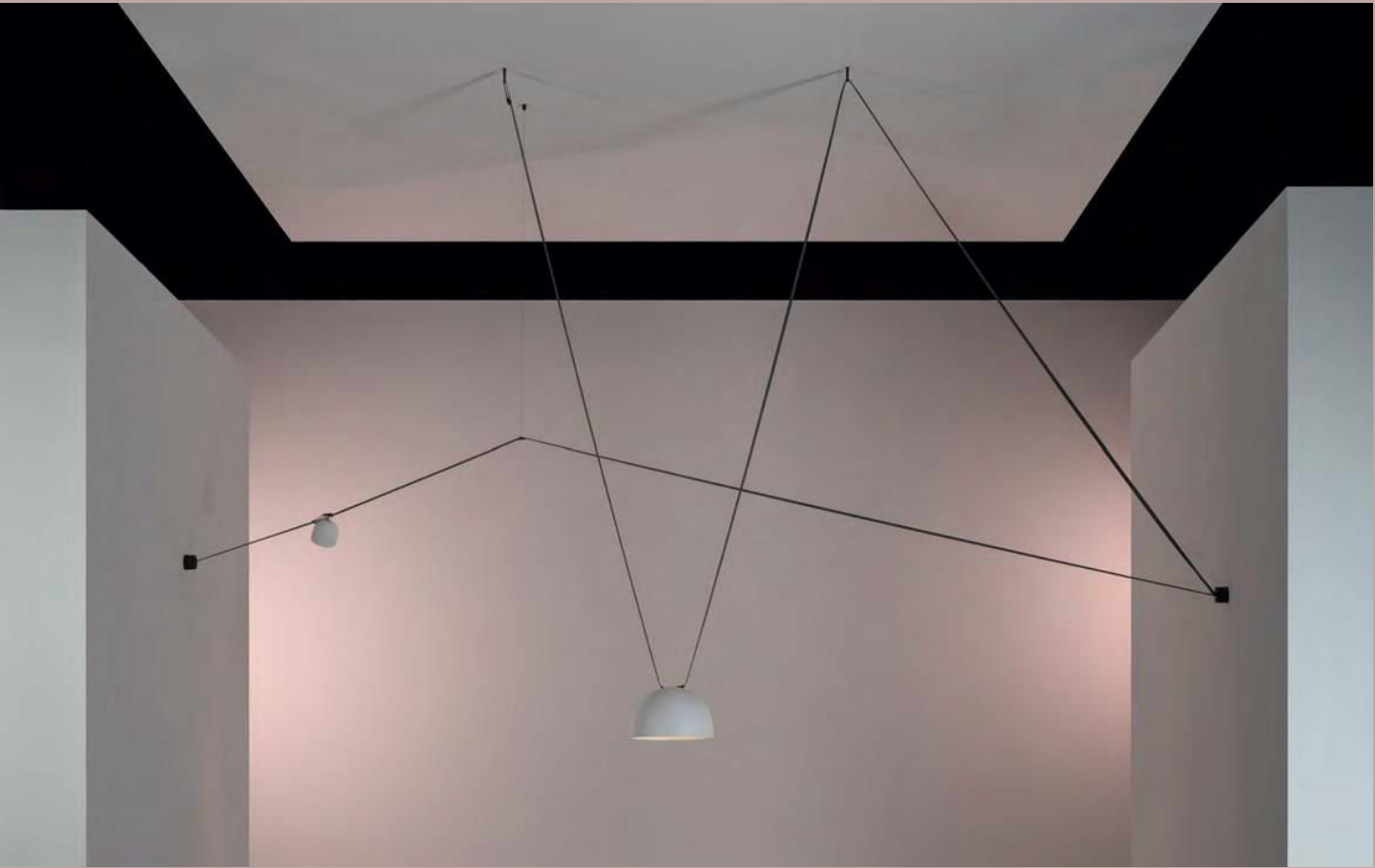




Framing Space

Lumiweave's lean lines define an interior with precise transverse trajectories. Stretching from wall to wall, the belt evokes the effect of a false ceiling, reducing a room's volume and bringing light closer. With kinetic crisscrossed and zigzagged configurations or soothing straight lines, the luminaires appear integrated into the architecture.





Defying Gravity

Lumiweave's nearly invisible tensor wire introduces an element of intrigue to lighting. The wire extends from the belt to the wall or the ceiling, quietly completing the luminaire's design while lending it the magical look of floating in midair in defiance of gravity.





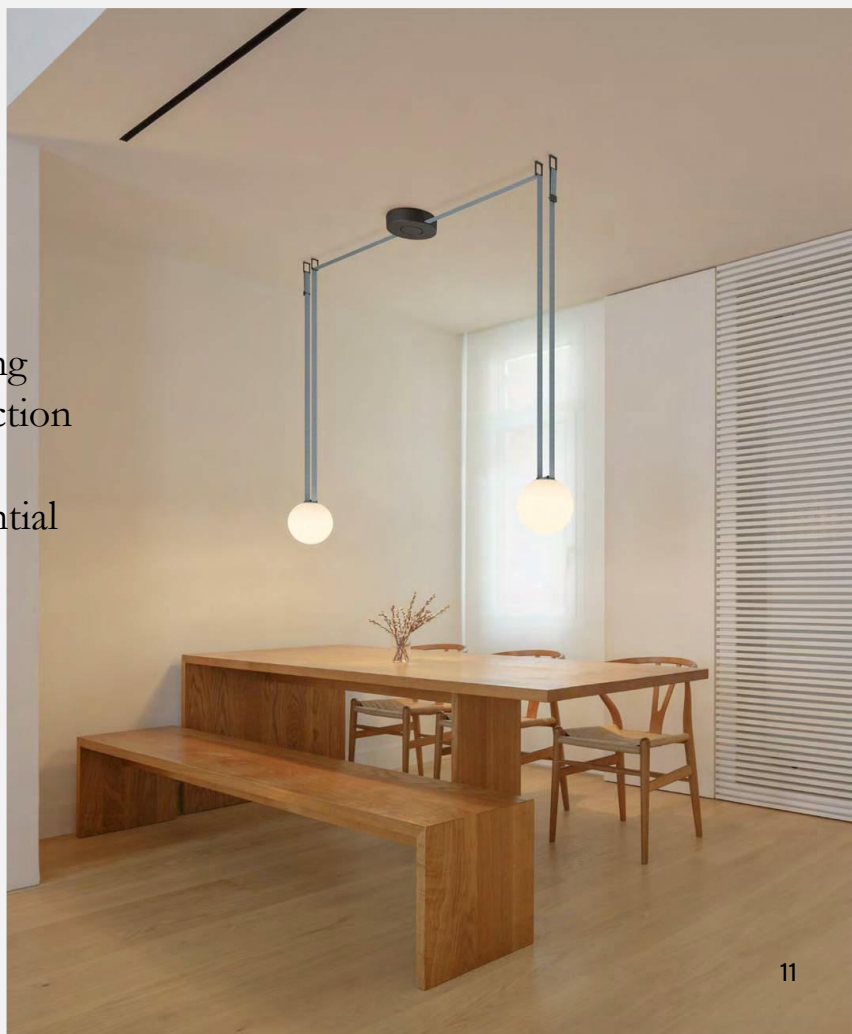
Flowing Pendants

Defined by their flowing, continuous forms, Lumiweave pendants provide endless possibilities for illuminating a space. Suspended overhead in silhouettes, soft and draped or taut and precise, their graphic presence creates distinctive ambiances.



Creative Canopy Connection

Lumiweave reimagines the use of the canopy. The belt flows in and out of the canopy, establishing conductivity and electrical connection where needed, with creative configurations becoming an essential element of the design.





Suspended Animation

Ceiling design no longer limits lighting options thanks to Lumiweave. A bar suspended from the ceiling serves as both a sleek architectural feature and an opportunity for creative exploration.



Luminaire types and lighting effects



Sphere

360° Diffusion lighting distributes light equally in all directions (360°). It attracts a relaxed gaze towards the point of light, and creates a calm, very comfortable atmosphere. The light sphere bathes all surfaces of the space, producing a peaceful, richer and extremely homogenous ambience.



Semisphere

Directed diffusion lighting

emits a soft light that generates low contrasts between the illuminated areas and the shadows cast. The opaque part of the shade helps to direct the light through the diffuser, providing illumination that is both peaceful and concentrated at the same time.



Cone

Directed diffusion lighting

emits a soft light that generates low contrasts between the illuminated areas and the shadows cast. The opaque part of the shade helps to direct the light through the diffuser, providing illumination that is both peaceful and concentrated at the same time.



Linear Diffuser

General lighting

provides a high degree of uniformity on the horizontal plane and generates a first layer of illumination on which to add more specific lighting applications. It generates soft shadows and subdued brightness in which the space and its component elements do not display visual hierarchies.



Linear Low UGR

High-efficiency, low-glare general linear lighting offers medium brightness and clarity of forms. Direct illumination, extended beam and luminaire performance enable installations with high-energy efficiencies and low-glare levels below UGR<19.

High-comfort, low-glare general linear lighting provides high levels of illumination and comfort with UGR levels below 19. It is also ideal for work or meeting areas.



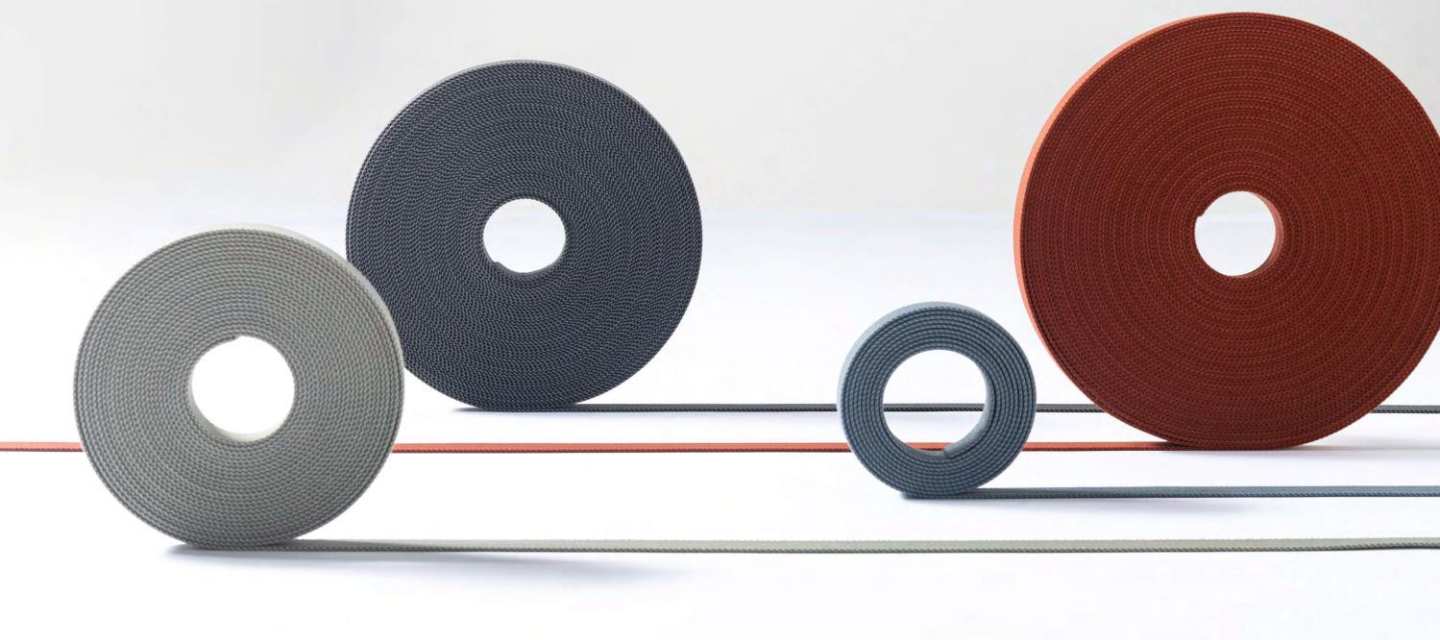
Spotlight

Directed diffusion lighting

emits a soft light that generates low contrasts between the illuminated areas and the shadows cast. It is ideal for reading situations or when the light output is visible, as it does not produce glare.

Accent lighting

emphasizes objects or architectural elements with intensive cones of light. Luminance contrasts attract the eye and bring the illuminated objects into the foreground. The light output is directed towards the object or architectural element and not towards the person, in order to avoid glare.



Belt

● Dark Grey

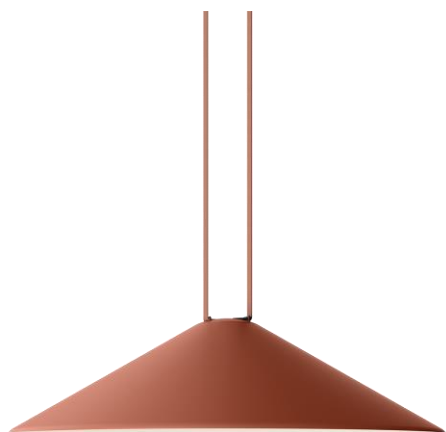
● Orange

Maximum 30 meters length
per electrical connection point.

Fire resistance : V0 class

Material: Polyester + mica conductive layer

Cone

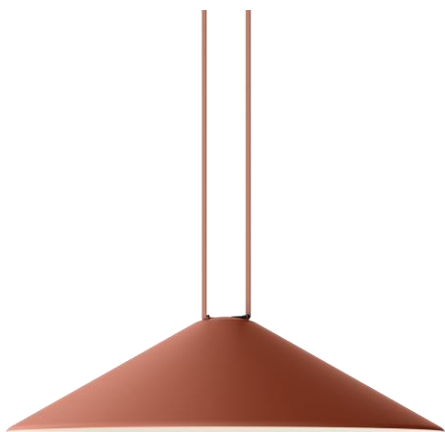
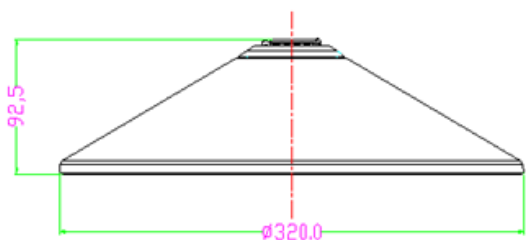


Model	W	LUM	CCT	CRI
C320	15	1200lm	3000K	90

C320

OPTIONS

Input Volt	DC48V
Beam angle	360°
CCT	2700K / 3000K / 4000K / 5000K
Material	Aluminum + PC
Electrical option	On / Off

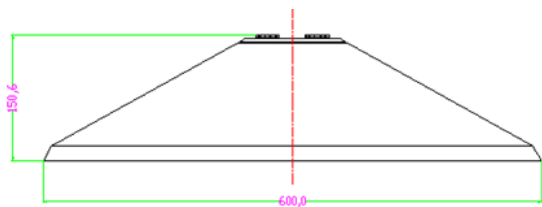


Model	W	LUM	CCT	CRI
C600	24	1920lm	3000K	90

C600

OPTIONS

Input Volt	DC48V
Beam angle	360°
CCT	2700K / 3000K / 4000K / 5000K
Material	Aluminum + PC
Electrical option	On / Off



Sphere

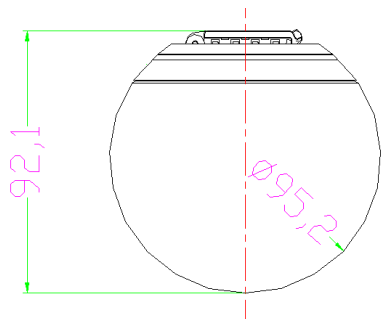


Model	W	LUM	CCT	CRI
D95	6	570lm	3000K	90

D95

OPTIONS

Input Volt	DC48V
Beam angle	360°
CCT	2700K / 3000K / 4000K / 5000K
Material	Aluminum + PC milky white
Electrical option	On / Off

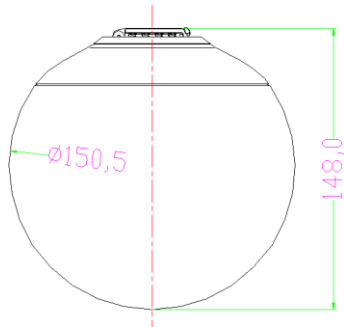


Model	W	LUM	CCT	CRI
D150	9	855lm	3000K	90

D150

OPTIONS

Input Volt	DC48V
Beam angle	360°
CCT	2700K / 3000K / 4000K / 5000K
Material	Aluminum + PC milky white
Electrical option	On / Off



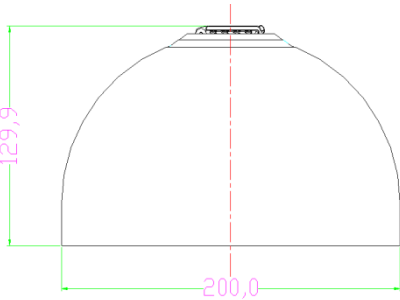
Semisphere

S200

OPTIONS

Input Volt	DC48V
Beam angle	120°
CCT	2700K / 3000K / 4000K / 5000K
Material	Aluminum + Polycarbonate
Electrical option	On / Off

Model	W	LUM	CCT	CRI
S200	12	840lm	3000K	90



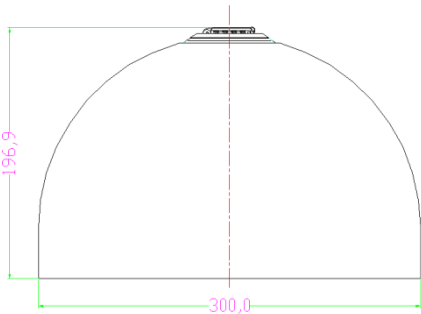
S300

OPTIONS

Input Volt	DC48V
Beam angle	120°
CCT	2700K / 3000K / 4000K / 5000K
Material	Aluminum + Polycarbonate
Electrical option	On / Off



Model	W	LUM	CCT	CRI
S300	15	1050lm	3000K	90



Spotlight

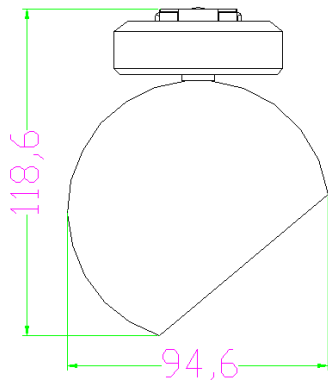


Model	W	LUM	CCT	CRI
CFC95	9	765lm	3000K	90

CFC95

OPTIONS

Input Volt	DC48V
Beam angle	48°
CCT	2700K / 3000K / 4000K / 5000K
Material	Aluminum + Reflective cup
Electrical option	On / Off



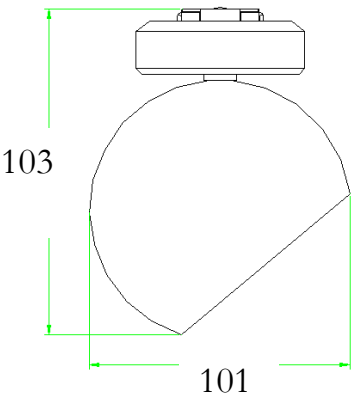
Shaking-Head Spotlight



CFC101

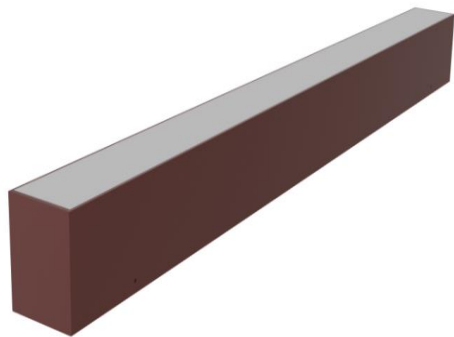
OPTIONS

Input Volt	DC48V
Beam angle	48°
CCT	2700K / 3000K / 4000K / 5000K
Material	Aluminum + PC milky white
Electrical option	On / Off



Model	W	LUM	CCT	CRI
CFC101	9	855lm	3000K	90

Linear

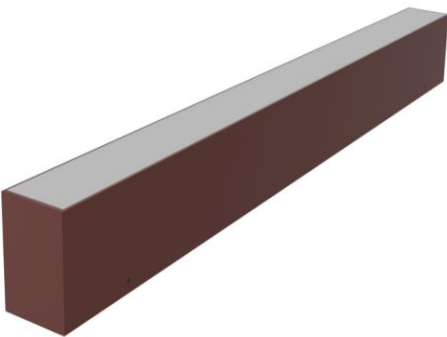
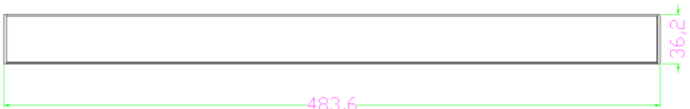


Model	W	LUM	CCT	CRI
FL480	15	1200lm	3000K	90

FL480

OPTIONS

Input Volt	DC48V
Beam angle	120°
CCT	2700K / 3000K / 4000K / 5000K
Material	Aluminum + PC
Electrical option	On / Off



Model	W	LUM	CCT	CRI
D960	30	2100lm	3000K	90

FL960

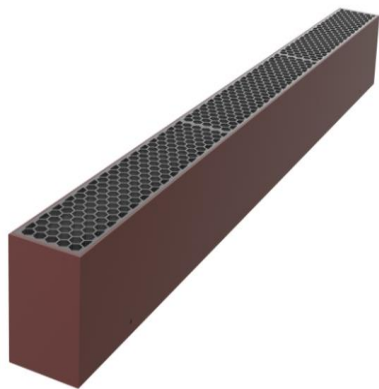
OPTIONS

Input Volt	DC48V
Beam angle	360°
CCT	2700K / 3000K / 4000K / 5000K
Material	Aluminum + PC
Electrical option	On / Off



Low UGR Linear

UGR < 19

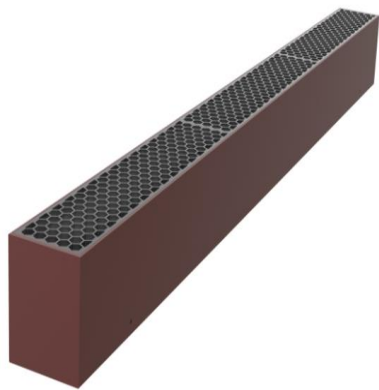
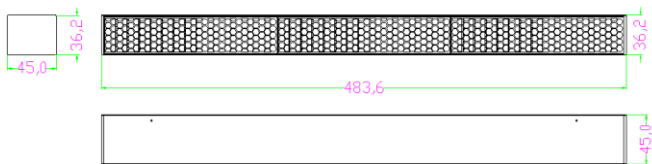


Model	W	LUM	CCT	CRI
LU480	15	1050lm	3000K	90

LU480

OPTIONS

Input Volt	DC48V
Beam angle	120°
CCT	2700K / 3000K / 4000K / 5000K
Material	Aluminum + honeycomb
Electrical option	On / Off

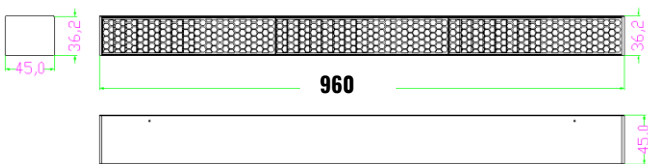


Model	W	LUM	CCT	CRI
LU960	30	2100lm	3000K	90

LU960

OPTIONS

Input Volt	DC48V
Beam angle	360°
CCT	2700K / 3000K / 4000K / 5000K
Material	Aluminum + honeycomb
Electrical option	On / Off



Tubo

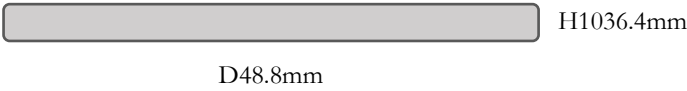
T100

OPTIONS

Input Volt	DC48V
Beam angle	360°
CCT	2700K / 3000K / 4000K / 5000K
Material	Aluminum + Acrylic
Electrical option	On / Off



Model	W	LUM	CCT	CRI
T100	20	1400lm	3000K	90



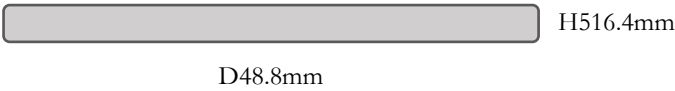
T50

OPTIONS

Input Volt	DC48V
Beam angle	360°
CCT	2700K / 3000K / 4000K / 5000K
Material	Aluminum + Acrylic
Electrical option	On / Off



Model	W	LUM	CCT	CRI
T50	10	700lm	3000K	90



UFO

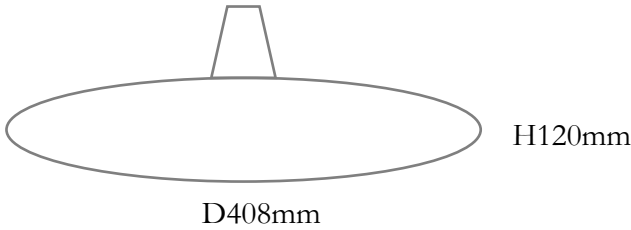


Model	W	LUM	CCT	CRI
U18	18	1440lm	3000K	90

U18

OPTIONS

Input Volt	DC48V
Beam angle	120°
CCT	2700K / 3000K / 4000K / 5000K
Material	Aluminum + PC
Electrical option	On / Off



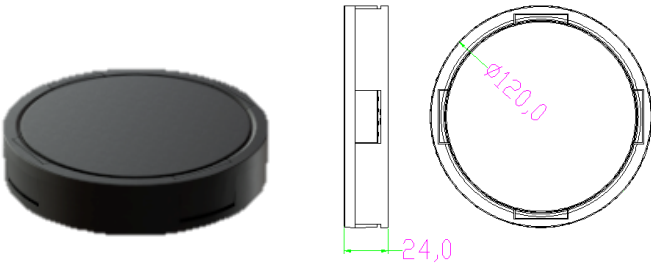
Electrical

Connection options

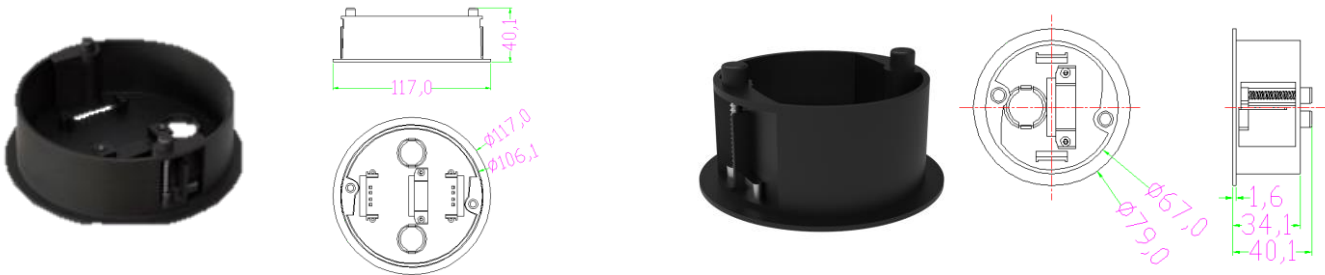
Choose your preferred installation
Option according to your needs



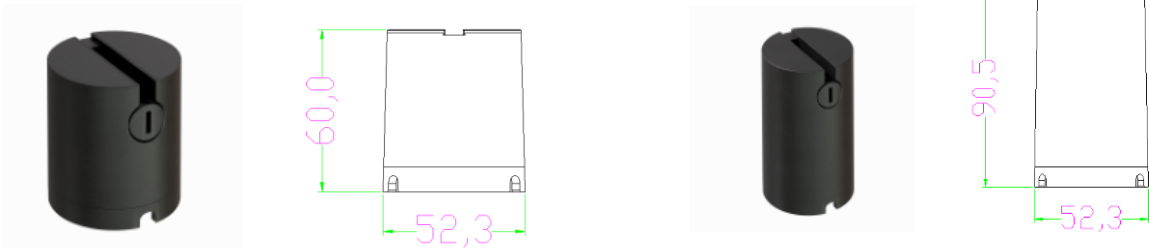
Surface mounted box



Built-in box



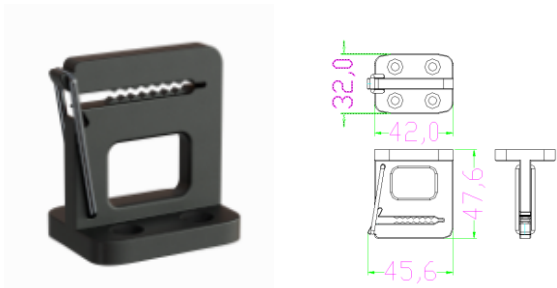
Tension pile



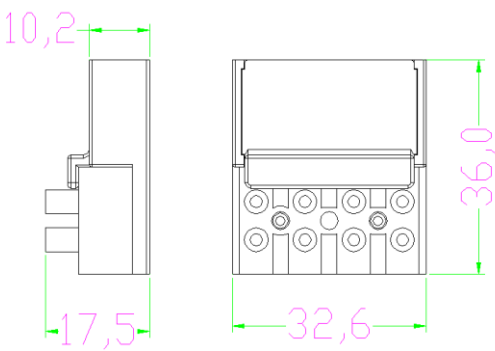
Electrical Connection options

Choose your preferred installation
Option according to your needs

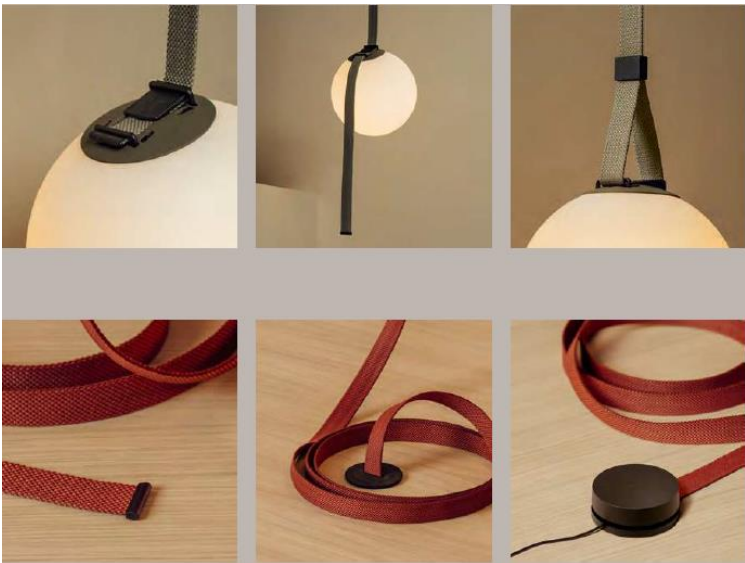
Fixed seat



Feed-In



Clip





Topsund Lighting Co.,LTD

www.topsund-led.com

info@topsund-led.com

6Floor,Xinggong Road,Yutang street

Guangming District